



भारत सरकार
भारतीय मौसम विज्ञान विभाग
GOVERNMENT OF INDIA
INDIA METEOROLOGICAL DEPARTMENT

मौसम विज्ञान केन्द्र, अमरावती ,

Meteorological Centre, Amaravati.

एसएम.आर. विश्वविद्यालय परिसरनीरुकोन्डा , गुन्टूरजिला 52250 -आन्ध्र प्रदेश,
SRM University Campus, Neerukonda, Guntur District, Andhra Pradesh -522502
Email: mc.amaravati@gmail.com , Mobile No: +919884302290

Dated: 13th October 2020

Time of Issue: 13:00 hrs IST

PRESS RELEASE - 7

Sub: Deep Depression crossed north Andhra Pradesh coast close to Kakinada, today morning and lay over north coastal Andhra Pradesh

The system crossed north Andhra Pradesh coast close to Kakinada (near Lat. 17.0°N & Long 82.4° E) between 0630 & 0730 Hrs IST of today, the 13th October 2020, as a Deep Depression with maximum sustained wind speed of 55-65 kmph gusting to 75 kmph. Moving west-northwestwards with a speed of 24 kmph during past 06 hours it lay centred at 0830 hrs IST of today, the 13th October, 2020 near latitude 17.0°N and longitude 82.1°E, about 15 km west-northwest of Kakinada (Andhra Pradesh) and 200 km east-southeast of Khammam (Telangana).

It is very likely to move west-northwestwards and weaken into a Depression during next 06 hours and further weaken into a Well marked low Pressure area during the subsequent 12 hours.

The Deep Depression is being monitored by coastal Doppler Weather Radars of Machilipatnam, Visakhapatnam and Gopalpur. As per Radar imageries the rain bands lie along the coastal districts of Andhra Pradesh and adjoining interior Districts. Moderate convection also lies over south Odisha and Telangana.

Details of forecast and heavy rainfall warning for today:

DAYS	FORECAST	WARNING
DAY 1 (VALID From: 13:00 Hrs IST of 13/10/2020 To : 0830 hrs IST of 14/10/2020)	Light to Moderate Rain or Thunder showers likely to occur at MOST places over NCAP & Yanam, SCAP and at MANY places over RAYALASEEMA.	Orange Warning (Be prepared): Heavy to very heavy rainfall very likely to occur at isolated places over the districts of West Godavari, Krishna, Guntur. Yellow Warning (Be updated): Heavy rainfall very likely to occur at isolated places over the districts of Srikakulam, Vizianagaram, Vishakapatnam, East Godavari, Kurnool, Anantapur.

Wind warning:

Squally wind speed reaching 55-65 kmph gusting to 75 kmph very likely to prevail over west central Bay of Bengal and along & off Andhra Pradesh coasts during next 3 hours and gradually decrease thereafter becoming 40-50 kmph gusting to 60 kmph during subsequent 06 hours.

Sea condition:

Sea condition will be rough to very rough over westcentral & adjoining northwest Bay of Bengal, southwest Bay of Bengal and along & off Odisha-Andhra Pradesh coasts till 13th October 2020 noon.

Fishermen warning:

Fishermen are advised not to venture into the sea along and off Andhra Pradesh and Yanam coasts till 13th October 2020 evening.

Damage expected over East & West Godavari, Vishakhapatnam, Vijayanagaram, Srikakulam & Krishna districts of north coastal Andhra Pradesh and Yanam.

- Damage to thatched huts. Minor damage to power and communication lines due to breaking of branches. Damage to loose / unsecured structures. Some breaches in Kutcha road due to heavy rainfall
- Some damage to paddy crops, banana, papaya trees and orchards & drumstick trees and Horticultural crops. Minor damage to coastal agriculture due to salt spray. Minor damage to Kutcha embankments.

S. Stella
Head & Scientist-E
MC AMARAVATI

N.B: SPATIAL RAINFALL DISTRIBUTION: ISOLATED :=< 25%, A FEW: 26-50%, MANY: 51-75%, MOST: 76-100%

COLOUR CODES	
Risk Level	Response
Very Low	No Action
Low	Be Updated
Medium	Be Prepared
High	Take Action

RAINFALL INTENSITY

Terminology	Rainfall Range	Terminology	Rainfall Range in mm
Light Spell	1 cm/hr	Very Intense Spell	3-5 cm/hr
Moderate Spell	1-2 cm/hr	Extremely Intense Spell	5-10 cm/hr
Intense Spell	2-3 cm/hr	Cloud Burst	>10 cm/hr

RAINFALL CATEGORIES

Terminology	Rainfall Range in mm	Terminology	Rainfall Range in mm
Very Light Rainfall	Trace - 2.4	Heavy Rainfall	64.5 - 115.5
Light rainfall	2.5 - 15.5	Very Heavy Rainfall	115.6 - 204.4
Moderate Rainfall	15.6 - 64.4	Extremely Heavy Rainfall	>= 204.5

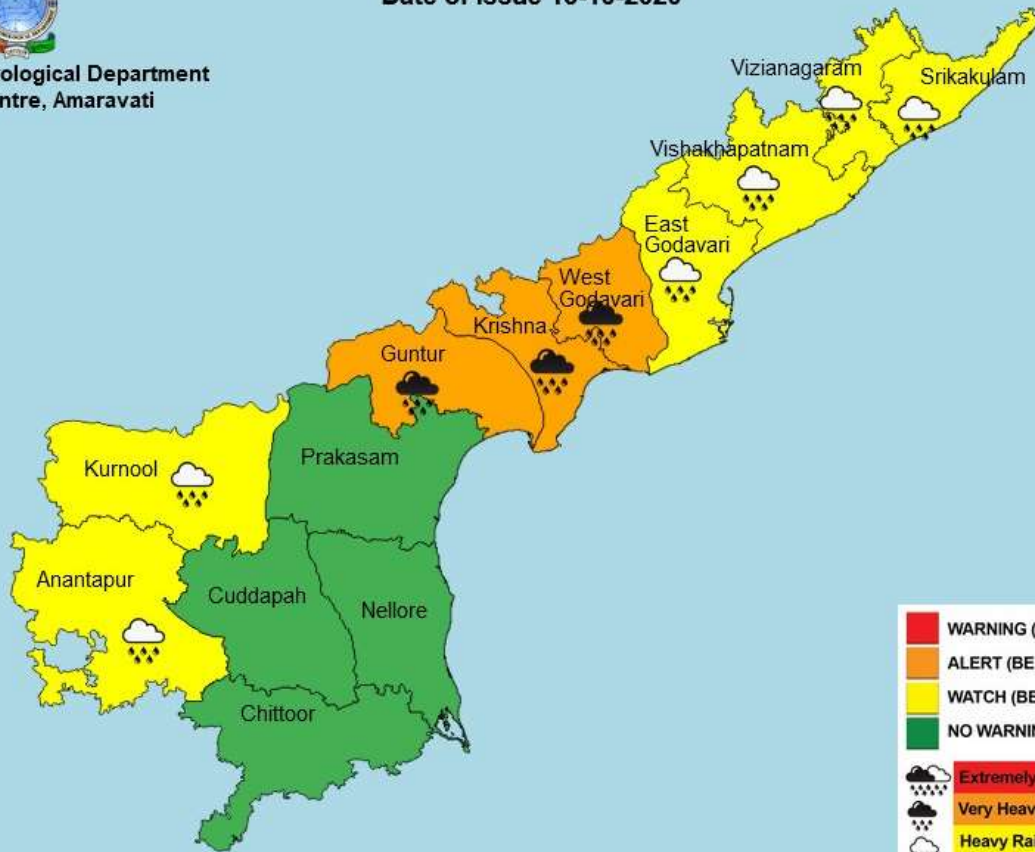


India Meteorological Department
Met Centre, Amaravati

Warning Day 1

(Valid from 1330 hrs IST of 13-10-2020 to 0830 hrs IST of 14-10-2020)

Date of Issue 13-10-2020

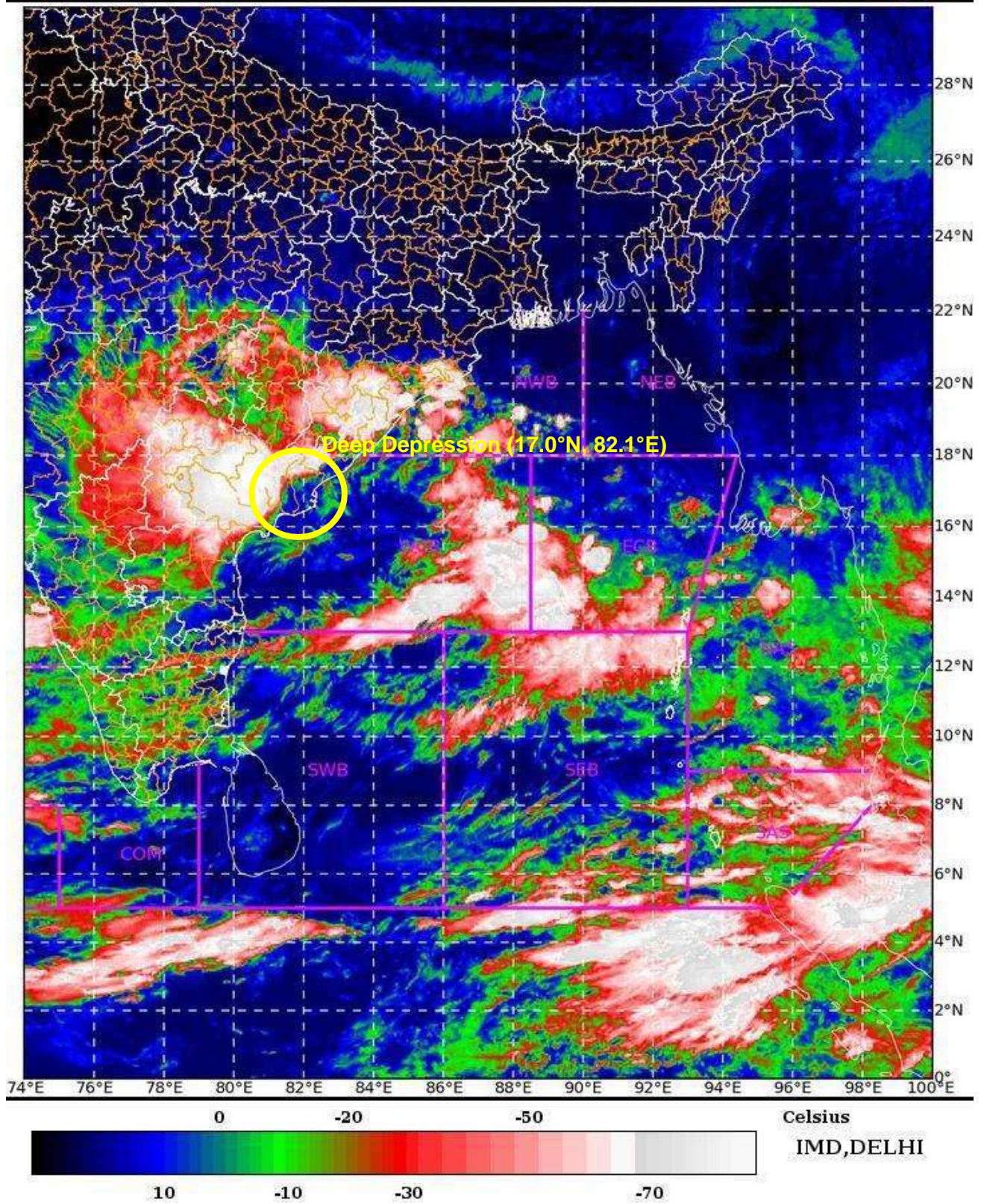


	WARNING (TAKE ACTION)
	ALERT (BE PREPARED)
	WATCH (BE UPDATED)
	NO WARNING (NO ACTION)
	Extremely Heavy Rainfall
	Very Heavy Rainfall
	Heavy Rainfall
	Wind warning

SAT : INSAT-3DR IMG 13-10-2020/(0345 to 0412) GMT

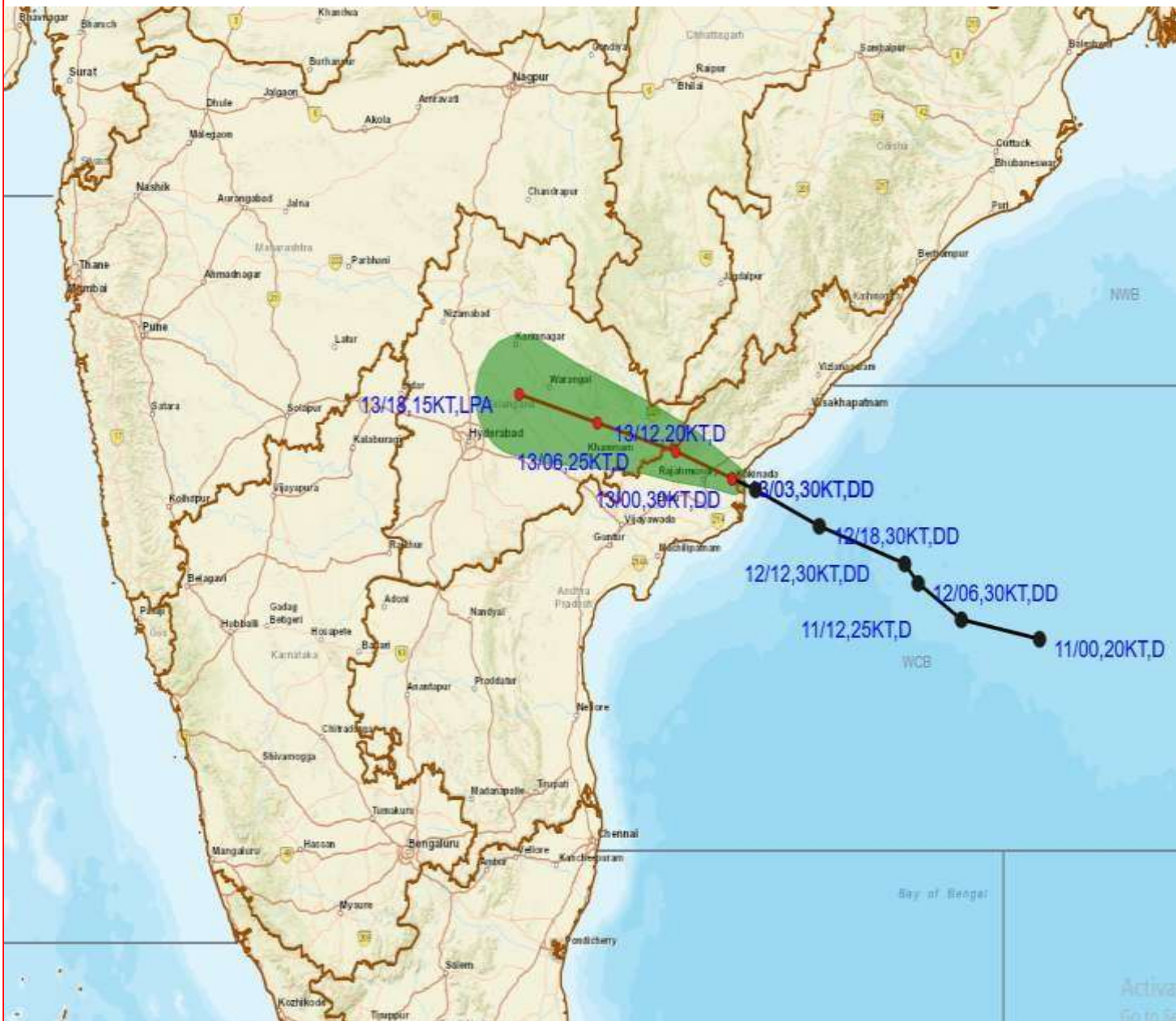
IMG_TIR1_TEMP 10.8 um 13-10-2020/(0915 to 0942) IST

L1C Mercator





OBSERVED AND FORECAST TRACK ALONGWITH CONE OF UNCERTAINTY OF DEEP DEPRESSION OVER NORTH COASTAL ANDHRA PRADESH BASED ON 0300 UTC OF 13TH OCT, 2020



DATE/TIME IN UTC

IST=UTC + 0530

L: LOW PRESSURE AREA

WML: WELL MARKED LOW PRESSURE AREA

D: DEPRESSION (17-27 KT)

DD: DEEP DEPRESSION (28-33 KT)

CS: CYCLONIC STORM (34-47 KT)

SCS: SEVERE CYCLONIC STORM (48-63KT)

VSCS: VERY SEVERE CYCLONIC STORM (64-89 KT)

ESCS: EXTREMELY SEVERE CYCLONIC STORM (90-119 KT)

SuCS: SUPER CYCLONIC STORM (≥ 20 KT)

● LESS THAN 34 KT

☪ 34-47 KT

☪ ≥ 48 KT

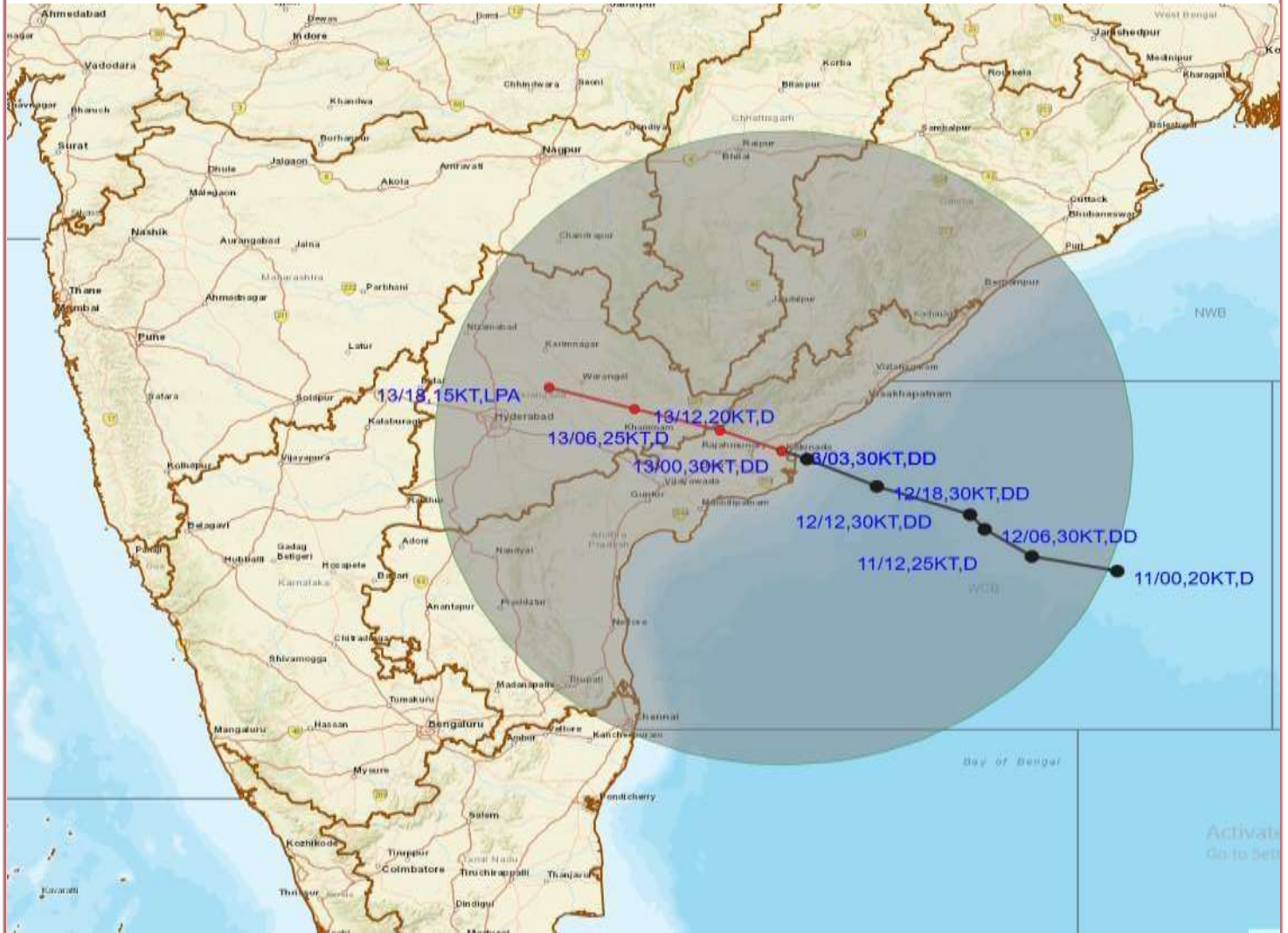
— OBSERVED TRACK

— FORECAST TRACK

▲ CONE OF UNCERTAINTY



OBSERVED AND FORECAST TRACK ALONGWITH QUADRANT WIND DISTRIBUTION OF DEEP DEPRESSION OVER NORTH COASTAL ANDHRA PRADESH BASED ON 0300 UTC OF 13TH OCT, 2020



DATE/TIME IN UTC
 IST=UTC + 0530
 L: LOW PRESSURE AREA
 WML: WELL MARKED LOW PRESSURE AREA
 D: DEPRESSION (17-27 KT)
 DD: DEEP DEPRESSION (28-33 KT)
 CS: CYCLONIC STORM (34-47 KT)
 SCS: SEVERE CYCLONIC STORM (48-63 KT)
 VSCS: VERY SEVERE CYCLONIC STORM (64-89 KT)
 ESCS: EXTREMELY SEVERE CYCLONIC STORM (90-119 KT)
 SuCS: SUPER CYCLONIC STORM (≥20 KT)

● LESS THAN 34 KT
 ○ 34-47 KT
 ○ ≥ 48 KT
 — OBSERVED TRACK
 — FORECAST TRACK
 — CONE OF UNCERTAINTY
 AREA OF MAXIMUM SUSTAINED WIND SPEED:
 28-33 KT (52-61 KMPH)
 34-49 KT (62-91 KMPH)
 50-63 KT (92-117 KMPH)
 ≥ 64 KT (≥118 KMPH)

IMPACT OVER THE SEA

MSW (knot/kmph)	Impact	Action
28-33 (52-61)	Very rough seas	Total suspension of fishing operations
34-49 (62-91)	High to very high seas	Total suspension of fishing operations
50-63 (92-117)	Very high seas	Total suspension of fishing operations
≥ 64 (≥118)	Phenomenal	Total suspension of fishing operations